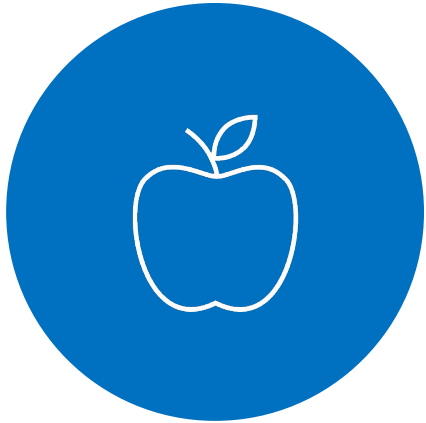




St. Charles Borromeo Catholic School

State of the School - September 2025

Agenda



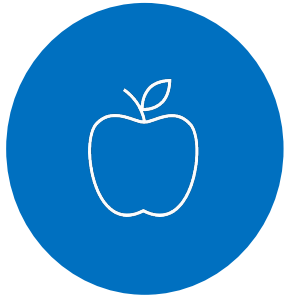
2025-26 SCHOOL
YEAR



FINANCIAL
PLANNING



MOVING FORWARD
TO 2026 AND
BEYOND

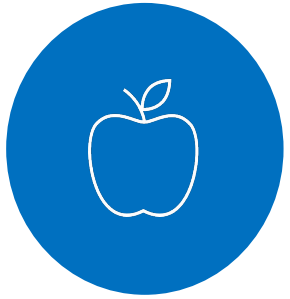


25-26 Programs and Plans

ADVANCEMENT	FINANCIALS	PROGRAMS	SCOPE
<p>Auction will continue to be a one night event with community parties.</p> <p>Annual Fund kick off in September with Spaghetti Feed/Bingo night to cap off Catholic Schools Week.</p> <p>SCRIP program supported with the SCRIP Office.</p>	<p>Updating a 5-year operating plan keeping student accessibility, program, salary and facility needs in mind and planned for.</p> <p>Creation of a 2026-2031 strategic plan including Operations, Academics, Financials, and Mission Alignment</p> <p>Budget is balanced with forecasting for future years financial health.</p>	<p>Resource Room support continues to support over 14% of our student body via accommodations planning and classroom support.</p> <p>Student placement for Freshmen at Bellarmine was high - continue to be the biggest pipeline into their Freshman class.</p> <p>Counseling office is running at full capacity. Groups, individual meeting, and other Social Emotional supports occurring in every grade level in the building.</p> <p>Karate, yoga, and in house band added to the list of co-curriculars.</p>	<p>SCOPE leadership team organized full year of events for students and families.</p> <p>SCOPE continues to be amazing in supporting students, teachers and families with events, and other activities.</p>



High School Preparation and Transition



Last year, over 90% of our students annually transitioned to Bellarmine Preparatory, with our other 10% going to Curtis, Stadium, Gig Harbor or other Tacoma High Schools.

For our departing 8th graders, ACE Exam prep begins in March with an in-class review to prepare them for final math placement in high school in May.

Every year, we ensure alignment of curriculum with Bellarmine to ensure easy placement as Freshmen. Math, ELA, Science, and Spanish curricula and areas of focus are reviewed to ensure a seamless transition. Our honors program will allow more and more students to step up into advanced math, ELA and the 3-year core Spanish, allows for Spanish honors.

Finally, we work with all schools to ensure supports are in place for our students to be successful. (including ACE supports with BPS and other work with IEP/504's in our public high schools).



Financial Planning for 2026 and beyond

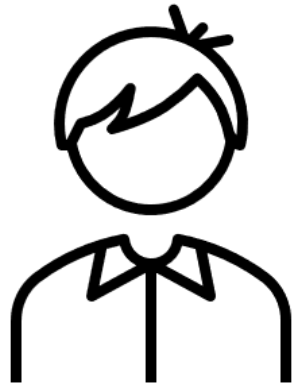


Guiding Principles:

- Keep Catholic schools accessible to all families who want it for their children with sustainable tuition growth
- Retain and pay faculty and staff with competitive market wages (90% of TPS as decided by joint councils across SCB)
- Keep expenses controlled and managed strategically via a multi-year plan
- and most importantly. offer a best in class Catholic education with a rigorous curriculum, extensive programs and clubs, and measurable student achievement that is a leader within the Archdiocese of Seattle.



The true cost of educating a SCB student for 25-26



The true cost of educating a student at SCB
is:

\$12,200

How do we fund?

Tuition and fees makes up a portion of income
(**about 79%**)

The parish allocation covers some additional funding
for our parish families (\$300K for the year)

Summer Programming income covers (\$160K)

Scholarships cover some more (\$258K)

Advancement makes up the rest (\$640K)

80% of all income goes to funding payroll costs

The Financial and Tuition Plan for 25-26 and beyond

- Managing our school is a delicate balance of tuition and accessibility, in conjunction with rising expenses. SCB's in parish and early ed tuition is still more than 10-15% less than many of our competitor schools, with an extensive program offering and extracurricular opportunities.
- Fundraising is crucial. The Annual Fund and Auction proceeds are part of the assumptions in our operating plan.
- Expense management is at the forefront of every conversation, with the baseline understanding that teacher compensation is paramount to our success.
- SCB's financial projection for the next 5 years is balanced, with expense controls in place and measured tuition increases.
- Thank you! Volunteerism and people in our community who help, allow us to keep our expenses down.



Scholarships and Financial Supports



How many students supported in 25-26: **91 (15% of our students)**

Total amount allocated for 25-26: \$258,000

Sources:



Fulcrum Foundation

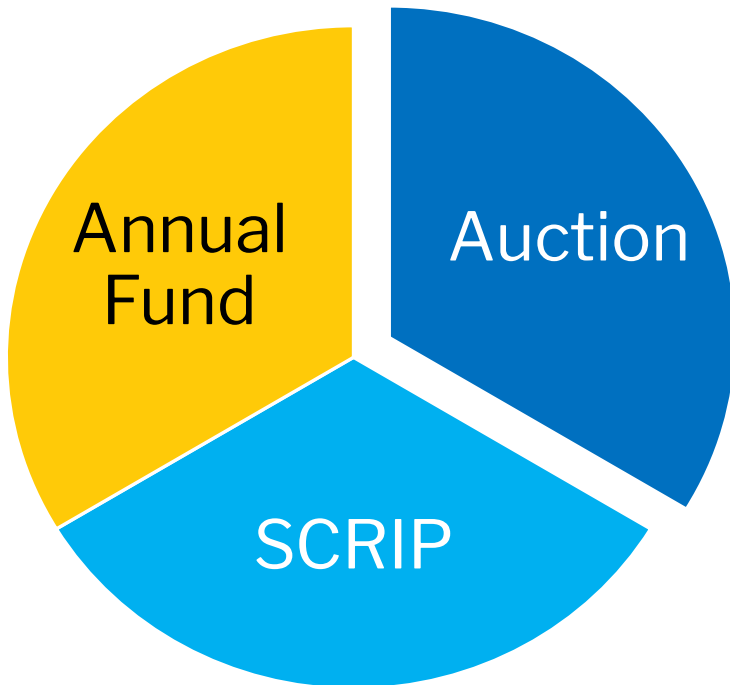
SCB Endowment

Knights of Columbus

Pierce County Deanery



Our Advancement Office



In order to cover the full cost of educating a SCB student, we run three major fundraisers a year:

The Annual Fund (\$200K)

The Auction (\$400K)

The SCRIP Program (\$40K)

These programs are essential for us to have the income to keep tuition low and our school accessible.

Other fundraisers driven by our SCOPE parent club also happen throughout the year to cover SCOPE events and help the school. Examples of this in 25-26 include the Boosterthon, Father-Daughter Dance, Mother-Son game day and Restaurant Takeovers.

Annual Fund

Chaired by: Wilcox Family



Join the **Journey;**
Shape the **Future.**

 Supporting our St. Charles Students

Tuition alone does not cover all operating expenses in a typical school year. St. Charles depends on the Annual Fund to help bridge the gap between tuition revenue and the operating budget.

Cost to educate a student at SCB:

\$12,200

Annual Cost of Tuition (preschool - 8th grade):

\$7,990-\$11,150

Gifts to the Annual Fund immediately serve our students and their growth in the current school year. Your gift supports every aspect of the school, including: classroom resources, school programs, tuition assistance, faculty development, and campus improvements.

2025-2026 Goals

100% SCB Family Participation

\$200,000

Applause Auction

Chaired by: Christin Derig



This is our 44th Annual Applause Auction!

Exciting this year:

- Auction Party Book
- Auction Made Easy
- Tuition Raffle
- Best of Live Raffle

Events & Dates to Remember:

- Auction Soiree Meeting - Tuesday, October 7th
- *Bid, Bite, & Sip* Event - Friday, May 15th
- *Midnight Masquerade* Applause Auction - May 16th

Applause Auction

Chaired by: Christin Derig

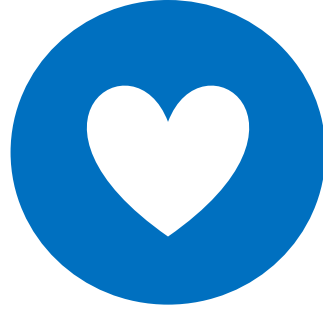


Family Expectations:

- Each family is expected to donate or procure an item for the Applause Auction. If you do not want to go out and procure or purchase an item, you can donate to our Super Shopper Funds and we will do shopping for you!
- Families donate a wide variety of items. Items generally range in value between \$150-\$250.

Additional Opportunities:

- At the beginning of October, look for Auction Sponsorship Packets to come home with your students.
- Auction Shirts - You can purchase auction shirts & sweatshirts to wear the last Wednesday of the month & any Spirit Shirt days



SCB Gives Back



Monthly Drives

- Each month the school will support a local organization to give give back.

Ministries we support:

- Shoes for the Children
- Mini Vinnies
- SCB & St. Leo's Food Bank
- Rescue Mission - Oodles of Noodles

2026-29 Forward Planning





25-28 Planning

25-26	26-27	27-30
Summer School – program augmentation/continuation.	Review art program space for program add (facility need)	Things being reviewed for 10 year capital investment: HVAC, Asphalt and Roofing
Focus on MAP scores and growth	Review Feist Hall improvements	Field Improvement remains our most desired facility improvement.
Accreditation begins with self-study	Accreditation complete	
Parish Building Slated to be completed		

Thank you

Teachers and Staff

Families and Parent Volunteers

Our School Commission: Olen Storaasli, President and members

Auction Chairs – Christin Derig

Annual Fund Leaders –The Wilcox family

SCOPE – Lindsay Jabara and leadership team

Parish Finance Council

And finally, the reason we are here, our students.

