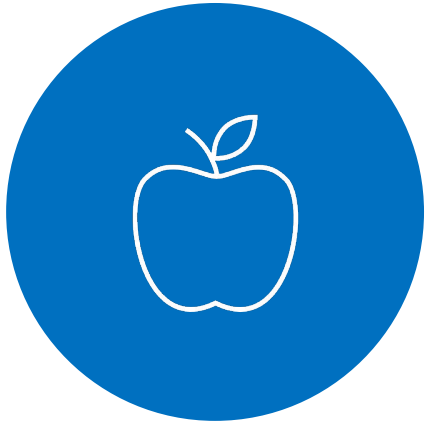




St. Charles Borromeo Catholic School

State of the School

Agenda



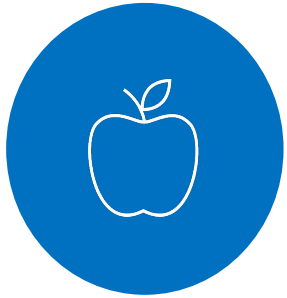
2024-25 SCHOOL
YEAR




FINANCIAL
PLANNING



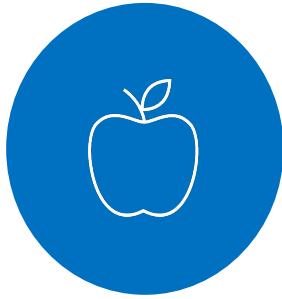
MOVING FORWARD
TO 2025 AND
BEYOND



24-25 Programs and Plans

ADVANCEMENT	FINANCIALS	PROGRAMS	SCOPE
<p>Auction will continue to be a one night event with community parties.</p> <p>Annual Fund kick off in September with Spaghetti Feed/Bingo night to cap off Catholic Schools Week.</p> <p>SCRIP program supported with the SCRIP Office.</p> 	<p>Completed a 5-year operating plan keeping student accessibility, program, salary and facility needs in mind and planned for. .</p> <p>Budget is balanced with forecasting for future years financial health.</p>	<p>Resource Room support has grown to supporting over 70 students across our school.</p> <p>Student placement for Freshmen at Bellarmine was high - many in honors programs (waiting for reporting from the school)</p> <p>Counseling office opened full time. Mrs. Nelson has already been an outstanding asset for our community.</p> <p>Implemented Chinese course in Middle school.</p>	<p>SCOPE leadership team organized full year of events for students and families.</p> <p>SCOPE has been amazing in supporting students, teachers and families with events, and other activities.</p>

High School Preparation and Transition



Last year, over 83% of our students annually transition to Bellarmine Preparatory, with our other 17% going to Curtis, Silas, Gig Harbor or other Tacoma High Schools.

For our departing 8th graders, ACE Exam prep will begin in March with an in-class review to prepare them for final math placement in high school.

Every year, we ensure alignment of curriculum with Bellarmine to ensure easy placement as Freshmen. Math, ELA, Science, and Spanish curricula and areas of focus are reviewed to ensure a seamless transition. Our honors program will allow more and more students to step up into advanced math, ELA and the 3-year core Spanish, allows for Spanish honors.

Finally, we work with all schools to ensure supports are in place for our students to be successful. (including ACE supports with BPS and other work with IEP/504's in our public high schools).



Financial Planning for 2025 and beyond

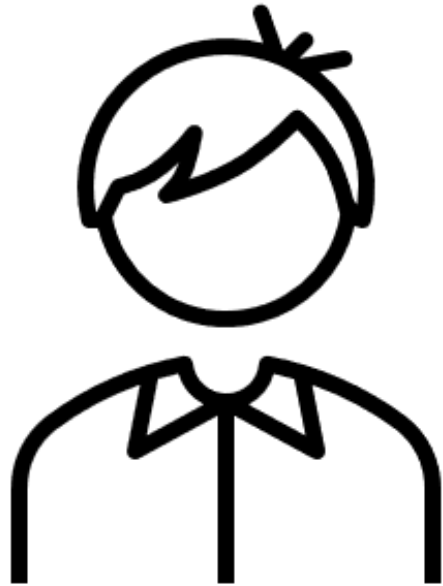


Guiding Principles:

- Keep Catholic schools accessible to all families who want it for their children with sustainable tuition growth
- Retain and pay faculty and staff with competitive market wages (90% of TPS as decided by joint councils across SCB)
- Keep expenses controlled and managed strategically via a multi-year plan
- and most importantly. offer a best in class Catholic education with a rigorous curriculum, extensive programs and clubs, and measurable student achievement that is a leader within the Archdiocese of Seattle.



The true cost of educating a SCB student for 24-25



The true cost of educating a student at SCB is:

\$11,735

Tuition and fees makes up a portion
(about 80%)

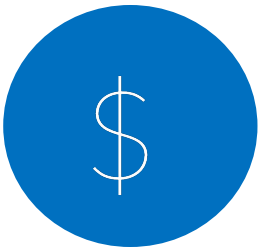
The parish allocation covers some additional funding for our parish families (\$300K for the year)

Scholarships cover some more (\$250K)

Advancement makes up the rest (\$640K)

The Financial and Tuition Plan for 24-25 and beyond

- Managing our school is a delicate balance of tuition and accessibility, in conjunction with rising expenses. SCB's tuition is still more than 10-15% less than many of our competitor schools, with an extensive program offering and extracurricular opportunities.
- Fundraising is crucial. The Annual Fund and Auction proceeds are part of the assumptions in our operating plan.
- Expense management is at the forefront of every conversation, with the baseline understanding that teacher compensation is paramount to our success.
- SCB's financial projection for the next 5 years is balanced, with expense controls in place and measured tuition increases.
- Thank you! Volunteerism and people in our community who help, allow us to keep our expenses down.



Scholarships and Financial Supports



How many students supported in 24-25: **98 (16% of our students)**

Total amount allocated for 24-25: \$248,000

Sources:



Fulcrum Foundation

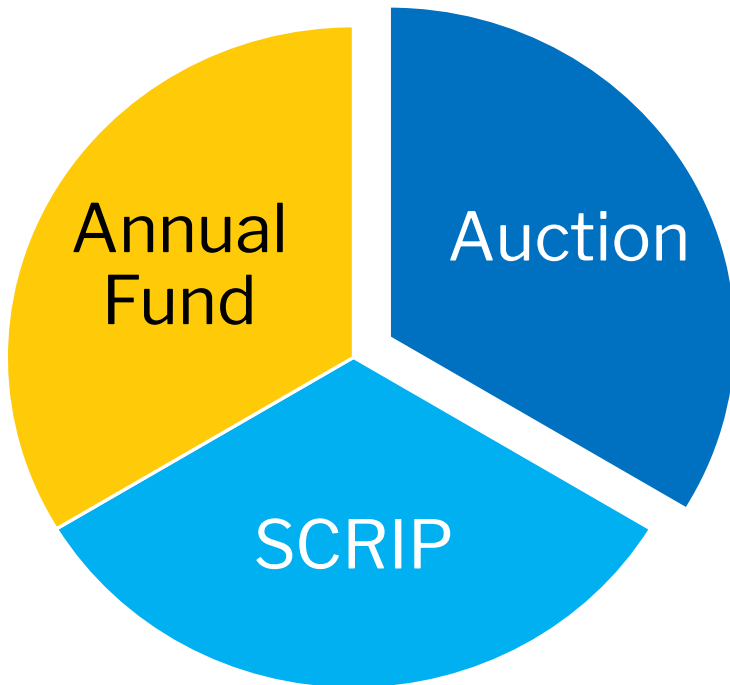
SCB Endowment

Knights of Columbus

Pierce County Deanery



Our Advancement Office



In order to cover the full cost of educating a SCB student, we run three major fundraisers a year:

The Annual Fund (\$200K)

The Auction (\$400K)

The SCRIP Program (\$40K)

These programs are essential for us to have the income to keep tuition low and our school accessible.

Other fundraisers driven by our SCOPE parent club also happen throughout the year to cover SCOPE events and help the school. Examples of this in 24-25 include the 5K Fun Run, Boosterthon, Father-Daughter Dance, and Restaurant Takeovers.

Annual Fund

Chaired by: Ranes Family



**Spread Joy,
Give Hope—**

Supporting our St. Charles Students

Tuition alone does not cover all operating expenses in a typical school year. St. Charles depends on the Annual Fund to help bridge the gap between tuition revenue and the operating budget.

Cost to educate a student at SCB:

\$11,735

Annual Cost of Tuition (preschool - 8th grade):

\$7,475-\$10,400

Gifts to the Annual Fund are split between our school's operating budget and our endowment. 40% of all donations go toward our operating budget which supports every aspect of the school. 60% of all donations support our endowment which helps us provide scholarships to any family who would like their students to receive a Catholic education.

2024-2025 Goals

100% SCB Family Participation

\$200,000

Applause Auction

Chaired by: Lauren Boulanger



This is our 43rd Annual Applause Auction!

Exciting this year:

- Auction Party Book
- Auction Made Easy
- *Glorious Green* Tuition Raffle
- Best of Live Raffle

Events & Dates to Remember:

- Auction Soiree Meeting - October 3rd
- *Bid, Bite, & Sip* Event - May 16th
- *Off to the Races* Applause Auction - May 17th

Applause Auction

Chaired by: Lauren Boulanger



Family Expectations:

- Each family is expected to donate or procure an item for the Applause Auction. If you do not want to go out and procure or purchase an item, you can donate to our Super Shopper Funds and we will do shopping for you!
- Families donate a wide variety of items. Items generally range in value between \$150-\$250.

Additional Opportunities:

- At the beginning of October, look for Auction Sponsorship Packets to come home with your students.
- Auction Shirts - You can purchase auction shirts & sweatshirts to wear the last Wednesday of the month.

2025-28 Forward Planning





25-28 Planning

24-25	25-26	26-27
Art Program and Summer School – program augmentation.	Website Modernization	Things being reviewed for 10 year capital investment:: HVAC, Asphalt and Roofing
Leadership Succession Planning	Finish furnishing Intermediate desks and primary desk replacement where needed.	
Playground Phase 4 Summer 2025. (Part of Auction Fund An Item)	Playground Phase 4 Summer 2026 carry forward.	
	Parish Building Slated to be completed	

Thank you

Teachers and Staff

Families and Parent Volunteers

Our School Commission: John Zelazny, President and members

Auction Chairs – Lauren Boulanger

Annual Fund Leaders –The Ranes family

SCOPE – Lindsay Jabara and leadership team

Parish Finance Council

And finally, the reason we are here, our students.

